



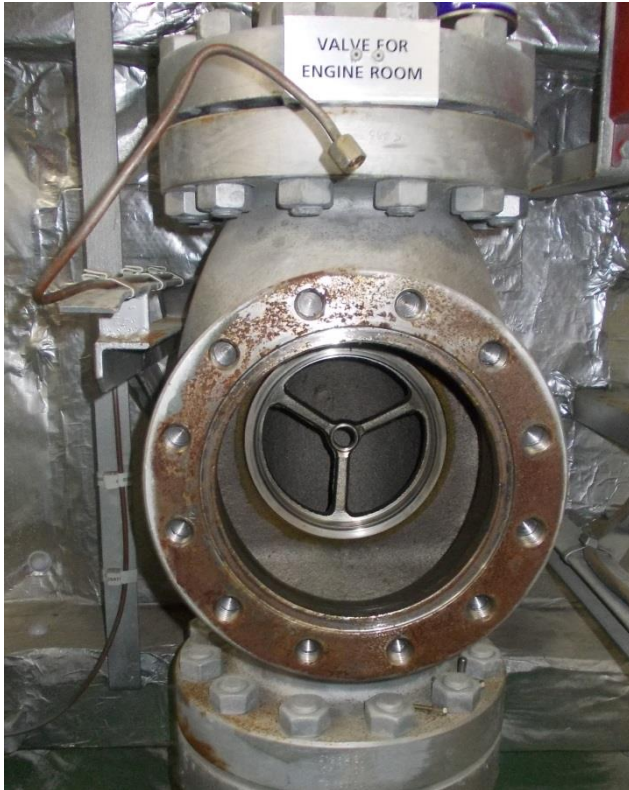
Vessel Name: M/V "SEATTLE EXPRESS"

PAGE 1 OF 4

Service Date: 24<sup>th</sup> Jan, 2015

**Subject: Dismantled & mantled, cleaned-up and tested Main Distribution Valves for Engine Room & Cargo Holds 1 to 9**

- Main Distribution Valves For Engine Room







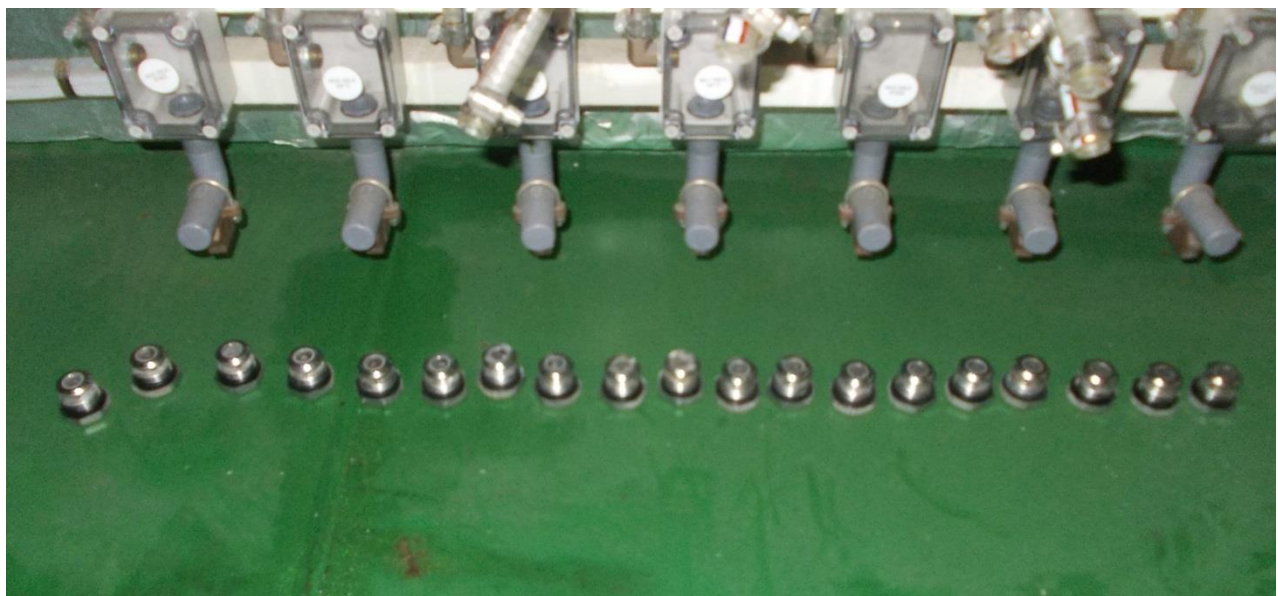
Vessel Name: M/V "SEATTLE EXPRESS"

PAGE 2 OF 4

Service Date: 24<sup>th</sup> Jan, 2015

**Subject: Dismantled & mantled, cleaned-up and tested Main Distribution Valves for Engine Room & Cargo Holds 1 to 9**

- Main Distribution Valves For Cargo Holds 1 to 9







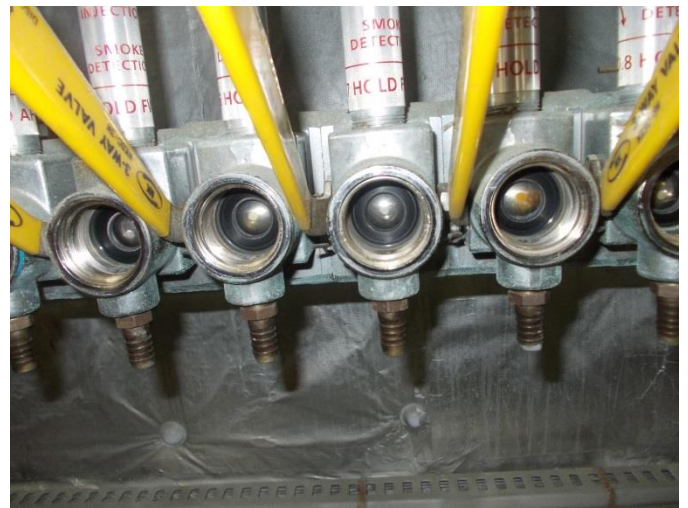
Vessel Name: M/V "SEATTLE EXPRESS"

PAGE 3 OF 4

Service Date: 24<sup>th</sup> Jan, 2015

**Subject: Dismantled & mantled, cleaned-up and tested Main Distribution Valves for Engine Room & Cargo Holds 1 to 9**

- Main Distribution Valves For Cargo Holds 1 to 9 (In Close Position)







Vessel Name: M/V "SEATTLE EXPRESS"

PAGE 4 OF 4

Service Date: 24<sup>th</sup> Jan, 2015

**Subject: Dismantled & mantled, cleaned-up and tested Main Distribution Valves for Engine Room & Cargo Holds 1 to 9**

- Main Distribution Valves For Cargo Holds 1 to 9 (In Open Position)

